







THE LANGUAGE OF COLOR: Weaving Stories Through Design

At the heart of our design philosophy lies the belief that color is more than just a visual element—it is a storyteller, an expression of mood, and a reflection of identity. Each of our collections has been curated to capture these nuances, offering palettes that not only complement their designs but enrich the narrative they bring to life.

We invite you to explore the richness of these palettes, to embrace their individuality, and to see how they can elevate your projects with depth and authenticity. With our unparalleled selection of beautifully crafted passementerie, this season, we are pleased to debut three distinct collections, inspiring you with endless possibilities to bring your vision to fruition.

First, Samuel & Sons proudly unveils **Kaleidoscope**, a collection by acclaimed UK-based passementerie artist Elizabeth Ashdown. A celebration of craftsmanship and color, this contemporary range of cords, borders, and fringes reimagines the rich heritage of passementerie through a fresh, dynamic lens. In this vibrant collection, Ashdown bridges the timeless art of passementerie with modern design sensibilities, creating pieces that are as energetic as they are elegant.

We are delighted to also introduce **Ilana**, which focuses on a narrative of understated elegance, woven from the finest denier linen yarns. With a poetic approach to color, Ilana captures the essence of nature through its artisanal passementerie, offering a tactile experience that is at once timeless and luxurious. The Ilana collection offers sophistication in the construction of its patterns, from a graceful tassel fringe with scalloped hangers to its handwoven crete and tassel tieback, defined by an elegant hourglass silhouette.

Our third introduction is the **Corsica** Collection, which captures the essence of coastal living, infusing any space with a sense of organic warmth. It incorporates borders, gimps, and fringes made from natural cotton and linen cording, as well as actual seashells. There is also a selection of textural borders and fringes woven from a soft slubbed yarn. These trimmings evoke a sense of organic warmth and will add luxurious dimensionality to any application.





CONTENTS

Kaleidoscope
6-13

Behind the Design:
Kevin Isbell
14-17

Ilana
18-25

Corsica
26-33

Thoughts on Color
34-35

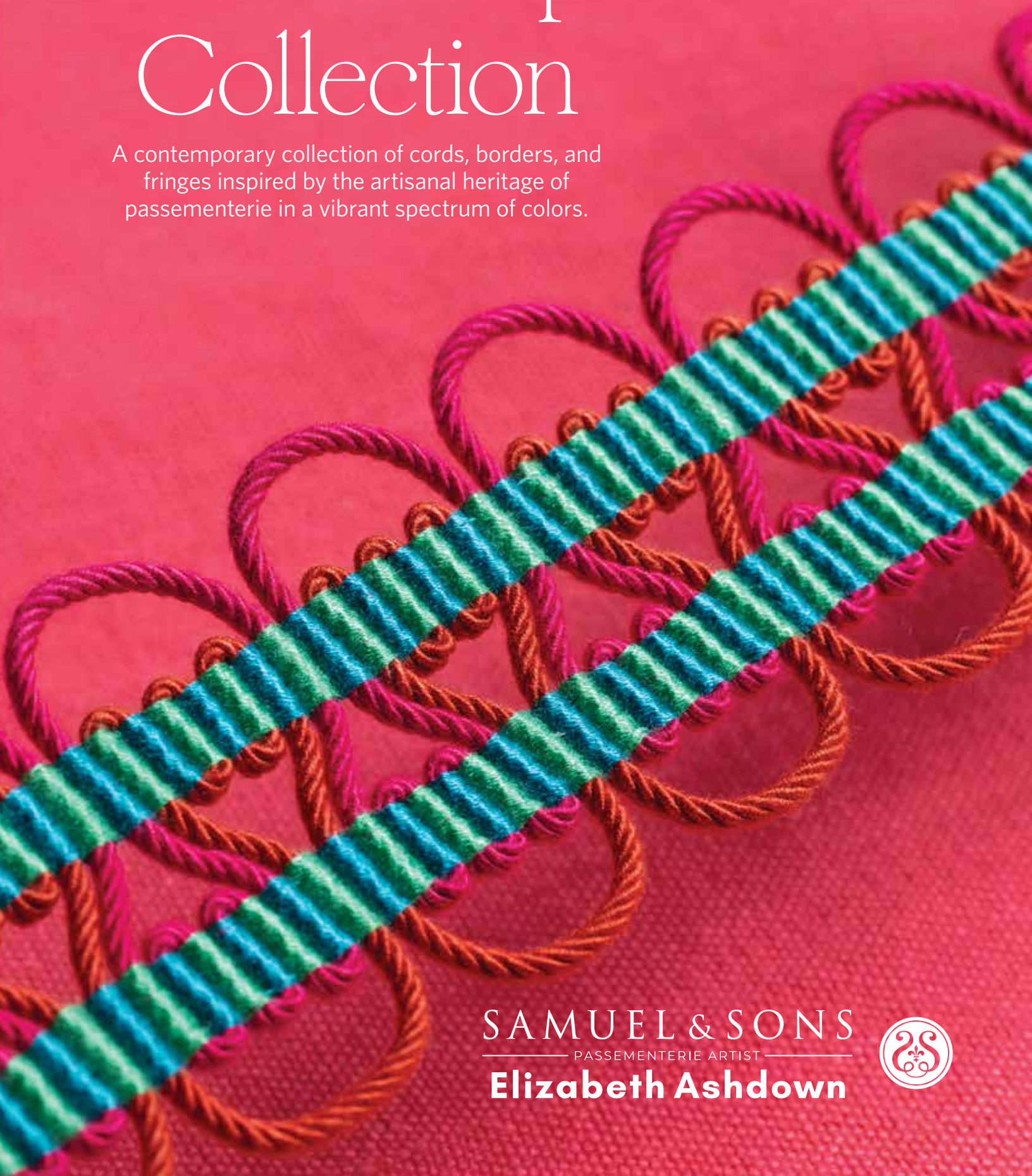
Belvedere
36-37

Orange Hill Farm
38-39

Technical Specs
40-43

Kaleidoscope Collection

A contemporary collection of cords, borders, and fringes inspired by the artisanal heritage of passementerie in a vibrant spectrum of colors.



SAMUEL & SONS
— PASSEMENTERIE ARTIST —
Elizabeth Ashdown





Opposite page: Kaleidoscope 2.55" Crete in Fiesta
Current page from top to bottom: Kaleidoscope Picot
Border in Powder, Kaleidoscope Tasseled Border in
Porcelain Blue and Kaleidoscope Brush Fringe in Murano
FABRIC HARLEQUIN AND SANDERSON



*From top to bottom: Kaleidoscope Tasseled
Border and Kaleidoscope 2.55" Crete in Fiesta,
Kaleidoscope Braid in Forget-Me-Knot and
Fiesta, Kaleidoscope Brush Fringe in Garland and
Kaleidoscope Crete in Fiesta and Pavilion*

FABRIC GP & J BAKER



From top to bottom: Kaleidoscope Bow Border
in Murano, Kaleidoscope Cord with Tape in
Garland, Kaleidoscope Pom Pom Fringe in Lupine,
Kaleidoscope Bow Border and Brush Fringe in Fiesta
FABRIC HARLEQUIN AND SANDERSON



"This collaboration celebrated the creative synergy between Elizabeth Ashdown and Samuel & Sons. Together, we curated patterns and palettes, blending Elizabeth's artistry with our aesthetic. Elizabeth's inventive techniques and fresh perspective made this partnership both inspiring and relevant, illustrating the best of both of our worlds."

Marisa Gutmacher
VP of Design



*Kaleidoscope Bow
Braid in Fiesta,
Garland and Murano*



About the Kaleidoscope Collection

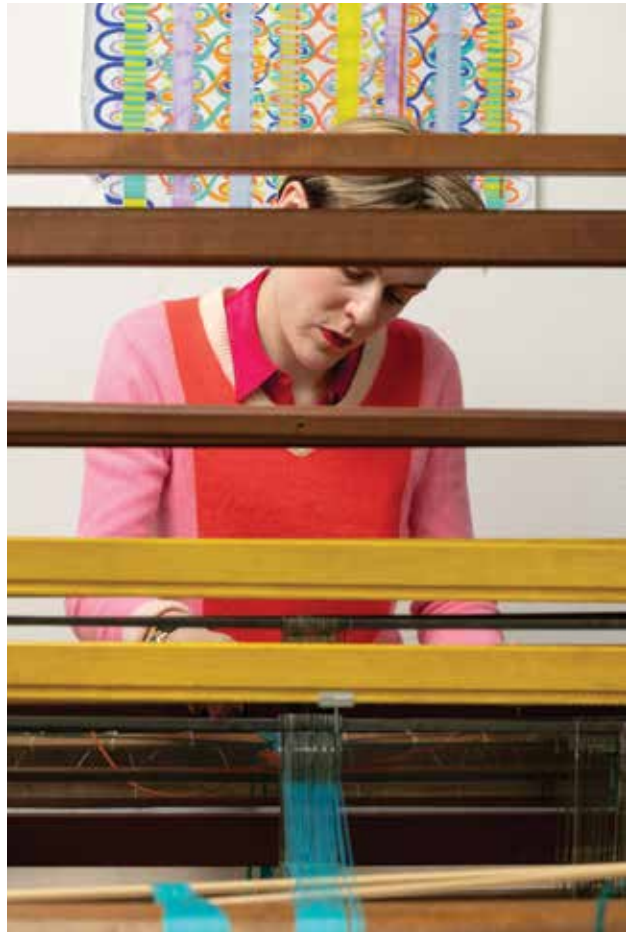
Carefully crafted through traditional hand techniques, Kaleidoscope redefines passementerie with an energetic and playful approach, while remaining true to the legacy of the craft. Each piece in the collection represents hours of meticulous handwork, reflecting Elizabeth Ashdown's mastery of her art. Developed through extensive creative exploration, every pattern was designed by hand, transforming centuries-old techniques into a celebration of modern artistry.

Inspired by the interplay of color, pattern, scale, and texture, the Kaleidoscope collection is a result of Ashdown's deep, yet playful, explorations. With research rooted in patchwork quilts, 1960s Op Art, and the timeless designs of heritage passementerie, the collection reflects a contemporary approach that embraces repetition, color blocking, and handmade geometry.

Ashdown's journey from sketchbook to loom is a story of vibrant creativity. "Each woven combination was born out of a desire to push the boundaries of color placement and material, resulting in a collection that is as energetic as it is refined," says Ashdown. Through a hands-on process of collages, paintings, and embroideries, Kaleidoscope came to life, where craftsmanship and creativity come together in a radiant expression of contemporary passementerie.

About Elizabeth Ashdown

Elizabeth Ashdown is one of only a handful of passementerie artists working in the UK today. Elizabeth combines traditional and endangered craft skills with a contemporary aesthetic in order to create intriguing, energetic and playful passementerie. Working from her studio in London, Elizabeth uses traditional handmaking techniques, combining unexpected colour palettes, mixed materials, and vibrant patterns in order to create innovative modern passementerie. Elizabeth is the author of *Passementerie: Handcrafting Contemporary Trimmings, Fringes, Tassels and More* published by Schiffer Craft. Elizabeth's work has been featured in numerous publications including *Architectural Digest*, *Veranda*, *Livingetc*, *Home & Garden* and the *Financial Times Style Magazine*.



“The Kaleidoscope collection is a stunning celebration of the joyful and energetic combination of colour and craft. Developed through extensive creative exploration, each pattern was entirely designed by hand using traditional passementerie making techniques. The collection showcases a contemporary, energetic, and playful approach to passementerie whilst honouring the heritage of the craft.”

— Elizabeth Ashdown, Passementerie Artist —





Behind the Design:
Kevin
Isbell

Los Angeles-based designer Kevin Isbell opens the door on a bold apartment overlooking Central Park in NYC. We spoke with him about his inspiration, his favorite colors, and how to make trim feel at home in contemporary projects.





SAMUEL & SONS: Let's set the scene — tell us about this incredible project.

KEVIN ISBELL: This pied-à-terre for an international family was truly a labor of love for me. The family wanted a sophisticated yet approachable space that would reflect their dynamic lifestyle and the energy of the city. I wanted the apartment to feel as though it belonged to the city itself — but with a sense of calm that offered an escape from the hustle of the city.

S&S: You've worked on interiors across the world, from California to the Caribbean. How did this apartment's iconic location on Central Park South in New York City inform your design?

KI: The views of Central Park are right out your window, so I made sure to draw inspiration from the greens, blues, and warm earth tones you see throughout the seasons. But at the same time, I wanted to reflect the family's international sensibility. Their travels and multicultural background became integral to the narrative of the space. This meant incorporating a balance of bold design choices and subtle, timeless elements that would keep the space feeling fresh and layered over time.

S&S: Bold color is undeniably a hallmark of your work, yet your interiors maintain an effortless livability. How do you strike that balance?

KI: Color is definitely something I love to work with, but for me it's never just about making a statement for the sake of it. It's about creating a balance that feels both exciting and livable but also honoring the architecture and its location. When I use strong colors, I'm very intentional about how they interact with the rest of the space. The key is layering—layering textures, patterns, and tones so that the colors feel integrated and not overwhelming. It's the subtle variations of the color that give a room depth, far more than had the room been dipped in the same hue throughout.

S&S: What's one "rule" you think every interior designer should break at least once?

KI: One "rule" I think every designer should break, — and I blame Instagram for this one — is the idea that everything needs to feel perfectly coordinated. When a space is too perfectly matched, it can lose some of its soul. It's those unexpected pairings—the mix of patterns, styles, or textures—that give a room character and make it feel truly lived-in.

S&S: Your use of trimming feels very fresh and contemporary. What advice would you have for a designer who's hesitant to use trims because they think it may look too formal or old-fashioned?

KI: Trims can definitely have a reputation for feeling overly formal or old-fashioned, but that really depends on how you use them. My advice is to think of trim not as a traditional decorative element, but as an opportunity to add a subtle layer of detail or contrast. It's really about using it in a fresh, intentional way that enhances the overall design without making it feel fussy.

At the end of the day, trim is just another tool to add depth and personality to a space. Don't be afraid to experiment with it. When done thoughtfully, [trim] can actually make a space feel more current and tailored, rather than old-fashioned. It's about finding the right balance and using it in a way that complements the elements of the room.



S&S: Which trim do you always find yourself turning to?

KI: I do love a good tape—it's my go-to because it adds such a clean, finished look to just about anything. There's something about the simplicity and versatility of styles that I find really appealing. Whether it's on curtains, pillows, or furniture, tapes can create a strong, graphic edge that feels modern but still has that subtle hint of sophistication.

S&S: If you could only use one color combination for the rest of your career, which two colors would you be and why?

KI: Oh, that's a tough one! If I were forced to pick, I'd have to go with blue and green. There's just something timeless and versatile about that combination—they both come from nature, so they have this innate sense of calm and balance, but depending on the shades, they can also be bold and unexpected... But ask me again tomorrow, and I might pick something completely different—color is just too much fun to be tied down to one combination forever!

Ilana Collection

A collection of multi-tonal fine linen
cords, hand-tied fringes, and tassels in
a palette of sophisticated colors.





From top to bottom: Ilana Beaded Fringe in Honey and Bark, Ilana Loop Fringe in Honey, Ilana Cord with Tape in Alabaster and Ilana Tassel Fringe in Honey.

FABRIC **JIM THOMPSON**



*Ilana Single Tassel Tieback
in Evergreen and Honey*



*Ilana Loop Fringe and
Tassel Fringe in Alabaster*
FABRIC POLLACK

*From top to bottom: Ilana Crete,
Tassel Fringe and Border in Petal,
Ilana Border in Coral and Ilana Loop
Fringe in Petal, Ocean and Evergreen*



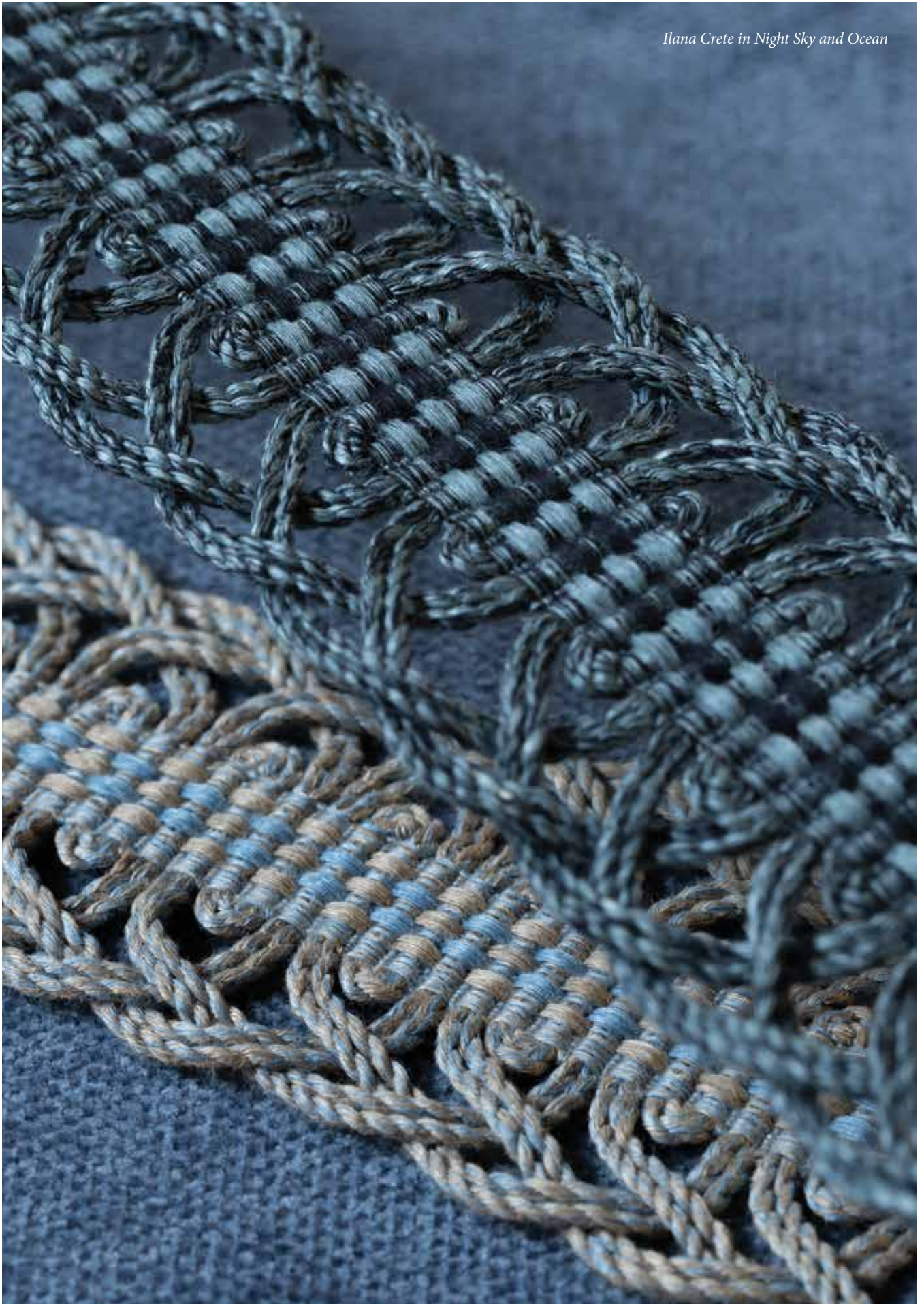


“The Ilana Collection embodies a timeless ethos, expressed through the intricate handwork of patterns like the Ilana Tassel Fringe, with its graceful, scalloped hangers, and the Ilana Single Tassel Tieback, defined by its elegant hourglass silhouette.”

Marisa Gutmacher
VP of Design



*Ilana Embroidered Border
and Loop Fringe in Ocean*





Corsica Collection

Inspired by Corsica's breathtaking shoreline, this collection embodies a poetic tapestry of embroidered and appliquéd borders, fringes, and braids.

*Corsica Embroidered Border in Flax
and Corsica Beaded Fringe in Canvas*




Corsica Embroidered Border in Flax



*Corsica Shell Fringe in Canvas and
Corsica Seashell Border in Oyster*



*Cavallo Gimp in Conch Shell and
Corsica Seashell Border in Coral*



“The trimmings in the Corsica Collection tell a story that reveres the organic allure and beauty of their intricate patterns”

Marisa Gutmacher
VP of Design



From top to bottom: Cavallo Beaded Fringe and Cavallo Tassel Fringe in Willow, Corsica Braid in Canvas, Cavallo Brush Fringe in Willow, Cavallo Gimp in Willow and Sail, Cavallo Brush Fringe in Conch Shell and Corsica Raffia Rosette in Coral

FABRIC **NOBILIS, ROMO**



Cavallo Tassel Fringe in Sail

From top to bottom: Cavallo Tassel Fringe in Willow, Aquamarine and Crest





*Délicat Silk Cord with Tape in Ice Blue
and Cavallo Border in Aquamarine*



*Cavallo Border in
Conch Shell, Crest, and Sail*

Thoughts on Color

We spoke with 5 design industry pros who shared why color is so important in interiors and how (and when!) to use it.



RICHARD SMITH
Madeaux

"Colour is fundamental to any room — a dark space for evening use suits jewel like tones, a bright and light room tends to work well with a pale colour palette, perhaps punctuated with a shot of an accent colour. For example, an emerald green decorative tape along the leading edge of a plain cream curtain would both bring the outside in as well as give a refined edge to a decorative scheme."



EUGENIA SOTO
Frederic Magazine

"Color, like many things, is best when it's balanced. Some of the greatest colorful interiors feel simultaneously harmonious and filled with tension."



KATE RHEINSTEIN BRODSKY
KRB

"Color in interiors is like punctuation marks in a sentence—it helps provide visual structure, clarity, and emphasis. Sometimes you need a period and sometimes you need an exclamation point!"



CELERIE KEMBLE
Kemble Interiors

"I tend to be very bold where color is concerned — it is a principal ingredient in making a home distinctive and personal. I think it is one of the most emotive ingredients in a well-layered room. As a DJ needs beat and a chef flavor, what is a designer without color?"



KATIE RIDDER
Katie Ridder Inc.

"I love using color for all sorts of reasons. It can be a more dramatic backdrop for art and neutral furnishings... I also think color blocking is always interesting in a room. Color is candy for the eyes."



*From top to bottom: Arlo Velvet
Border in Green Jasper, Sabine
Key Tassel in Acanthus and
Paloma Velvet Border in Coral*



Belvedere Collection

A beautiful collection of luxurious velvet borders in which contemporary patterns are created with intricate embroidery and cord appliqué.



MDS 8.25" Stripe Bullion Fringe in Iris

SAMUEL & SONS
MARK D. SIKES



Orange Hill Farm Collection

Inspired by the design elements within classic stripes, checks, and rosettes, Orange Hill Farm is a collection of beautifully tailored cords, borders, and fringes.

SAMUEL & SONS
MARK D. SIKES



SAMUEL & SONS
MARK D. SIKES



From top to bottom: MDS Check Border in Natural, MDS Stripe Piping in Iris, MDS Check Brush Fringe in Leaf, MDS 8.25 Bullion Fringe in Iris, MDS Embroidered Rosette Border in Wedgewood, and MDS Rosette Fringe in Willow

SAMUEL & SONS
MARK D. SIKES



SAMUEL & SONS
MARK D. SIKES



SAMUEL & SONS
MARK D. SIKES



SAMUEL & SONS
MARK D. SIKES



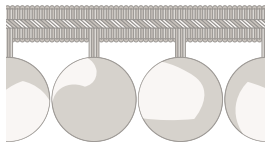
Kaleidoscope Collection



CT-61350 3/16" (5 mm)
Kaleidoscope Cord with Tape /
Câblé sur pied
44% CO, 32% MERCERIZED CO,
23% PES, 1% NY
*Colours : Angelica, Fiesta, Garland,
Lupine, Murano*



BR-61355 1.5" (38 mm)
Kaleidoscope Brush Fringe /
Marabout effilé
96% Mercerized CO, 4% PES
*Colours : Angelica, Fiesta, Garland,
Lupine, Murano*



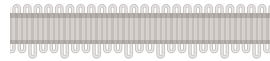
TF-61358 2.4" (60 mm)
Kaleidoscope Pom Pom Fringe /
Frangé pompons
Repeat / Raccord : 1.45" (36 mm)
91% WO, 6% CO, 2% RY, 1% NY
*Colours : Angelica, Fiesta, Garland, Lupine,
Porcelain Blue*



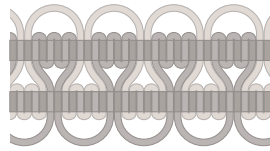
BT-61351 13/16" (20 mm)
Kaleidoscope Bow Border /
Galon cartisane
Repeat / Raccord : 3.45" (87 mm)
100% VI
*Colours : Angelica, Fiesta, Garland,
Murano, Palazzo*



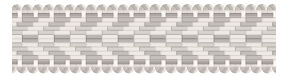
GB-61353 1.65" (42 mm)
Kaleidoscope Braid /
Galon
Repeat / Raccord : 1.55" (40 mm)
42.3% CO, 40.1% VI, 11.5% RY, 6.2% NY
*Colours : Angelica, Fiesta, Forget-Me-Knot,
Lupine*



BT-61352 1" (26 mm)
Kaleidoscope Picot Border /
Galon picot
62.5% VI, 32.8% CO, 4.7% NY
Colours : Angelica, Palazzo, Powder



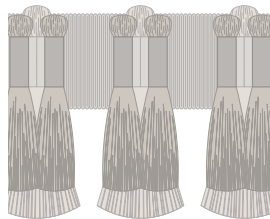
GB-61356 2.55" (65 mm)
Kaleidoscope 2.55" Crete /
Galon guipure 65 mm
Repeat / Raccord : 1.2" (30 mm)
57% VI, 43% CO
Colours : Fiesta, Garland, Porcelain Blue



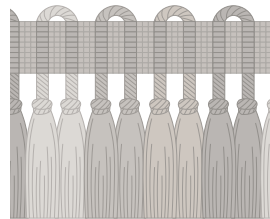
GB-61354 1.25" (32 mm)
Kaleidoscope Chevron Braid /
Galon chevron
100% MERCERIZED CO
Colours : Garland



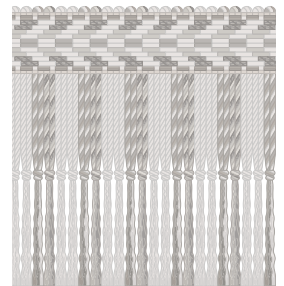
GB-61357 2.8" (71 mm)
Kaleidoscope Crete /
Galon guipure
Repeat / Raccord : 1.55" (40 mm)
39.3% CO, 26.6% RY, 20.1% VI, 13.9% NY
*Colours : Angelica, Fiesta, Lupine,
Palazzo, Pavilion*



BT-61361 3.75" (95 mm)
Kaleidoscope Tasseled Border /
Galon mèches
Repeat / Raccord : 1.75" (45 mm)
100% VI
Colours : Fiesta, Porcelain Blue



TF-61360 3.75" (95 mm)
Kaleidoscope Tassel Fringe /
Frangé mèches
Repeat / Raccord : 3.75" (95 mm)
95% VI, 5% PES
Colours : Fiesta, Lupine, Porcelain Blue



FR-61359 4.95" (12.5 cm)
Kaleidoscope Fringe /
Frangé
100% CO
Colours : Garland

Illana Collection



CT-61232 3/8" (9 mm)
Illana Cord with Tape /
Câblé sur pied
51% CO, 49% LI
*Colours : Alabaster, Bark, Coral, Evergreen,
Honey, Night Sky, Ocean, Petal*



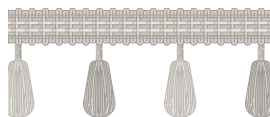
BR-61234 1.25" (32 mm)
Illana Loop Fringe /
Frangé
100% LI
*Colours : Alabaster, Bark, Coral, Evergreen,
Honey, Night Sky, Ocean, Petal*



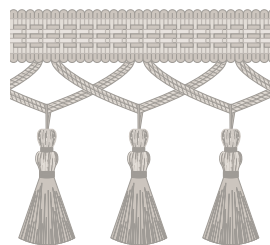
GB-61237 2.4" (60 mm)
Illana Crete /
Galon guipure
Repeat / Raccord : 2" (51 mm)
100% LI
*Colours : Alabaster, Bark, Coral, Evergreen,
Honey, Night Sky, Ocean, Petal*



BT-61233 1" (25 mm)
Illana Border /
Galon
100% LI
*Colours : Alabaster, Bark, Coral, Evergreen,
Honey, Night Sky, Ocean, Petal*



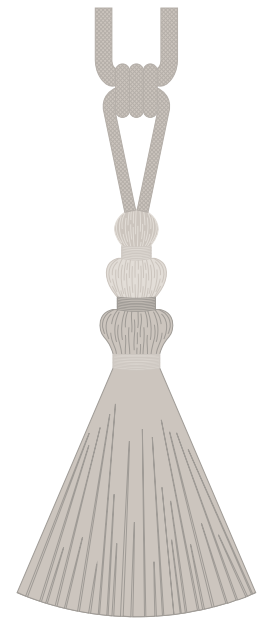
TF-61235 1.95" (50 mm)
Illana Beaded Fringe /
Frangé perles
Repeat / Raccord : 1.5" (38 mm)
68% PT, 32% LI
*Colours : Alabaster, Bark, Coral, Evergreen,
Honey, Night Sky, Ocean, Petal*



TF-61236 4.15" (10.5 cm)
Illana Tassel Fringe /
Frangé mèches
Repeat / Raccord : 1.65" (41 mm)
100% LI
*Colours : Alabaster, Bark, Coral, Evergreen,
Honey, Night Sky, Ocean, Petal*



KT-61238
Illana Key Tassel /
Gland de clé
Height / Hauteur : 4.75" (12 cm)
100% LI
*Colours : Alabaster, Bark, Coral, Evergreen,
Honey, Night Sky, Ocean, Petal*

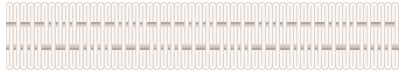


TT-61239
Illana Single Tassel Tieback /
Embrasse 1 gland
Height / Hauteur : 11" (28 cm)
Spread / Ouverture : 36" (91 cm)
76% LI, 24% CO
*Colours : Alabaster, Bark, Coral, Evergreen,
Honey, Night Sky, Ocean, Petal*

Corsica Collection



CT-61215 1/2" (12.5 mm)
Corsica Raffia Cord with Tape /
Câblé sur pied raffia Corsica
 61% CO, 31% RAFFIA, 7% PES, 1% NY
 Colours : Coral, Leaf, Sea



GB-61097 7/8" (23 mm)
Cavallo Gimp /
Lézarde Cavallo
 100% CO
 Colours : Aquamarine, Conch Shell, Crest, Ocean, Sail, Willow



GB-60788 1.2" (30 mm)
Corsica Braid /
Galon Corsica
 70% LI, 30% PC
 Colours : Canvas



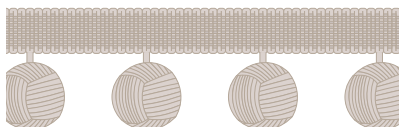
BR-61096 1.5" (38 mm)
Cavallo Brush Fringe /
Marabout effilé Cavallo
 96.5% CO, 3.1% PES, 0.4% NY
 Colours : Aquamarine, Conch Shell, Crest, Ocean, Sail, Willow



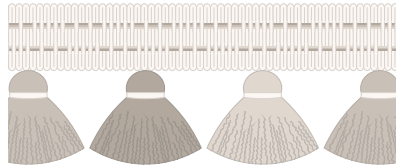
TF-61093 1.75" (45 mm)
Cavallo Beaded Fringe /
Frangé perles Cavallo
 Repeat / Raccord : 4.75" (12 cm)
 78% WD, 20% CO, 2% PES
 Colours : Aquamarine, Conch Shell, Crest, Ocean, Sail, Willow



TF-61032 1.9" (48 mm)
Corsica Shell Fringe /
Frangé coquillages Corsica
 Repeat / Raccord : 1.25" (32 mm)
 83% Shell, 14% Solution Dyed PC, 3% PES
 Colours : Canvas



TF-60787 1.9" (48 mm)
Corsica Beaded Fringe /
Frangé perles Corsica
 Repeat / Raccord : 1.55" (40 mm)
 73% LI, 26% WD, 1% PES
 Colours : Canvas



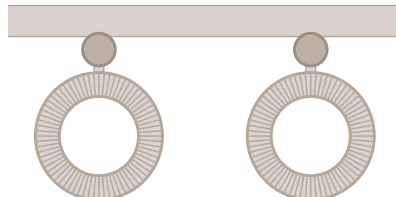
TF-61098 2.5" (63 mm)
Cavallo Tassel Fringe /
Frangé mèches Cavallo
 Repeat / Raccord : 4.75" (12 cm)
 96.4% CO, 3.6% PES
 Colours : Aquamarine, Conch Shell, Crest, Ocean, Sail, Willow



BT-61094 2.60" (66 mm)
Corsica Botanical Border /
Galon botanique Corsica
 Repeat / Raccord : 7.7" (19.5 cm)
 54% CO, 36% LI, 10% Spun PES
 Colours : Canvas, Coral, Ocean, Willow



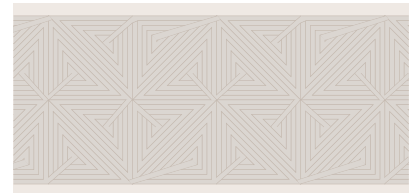
BT-61095 2.75" (70 mm)
Cavallo Border /
Galon Cavallo
 Repeat / Raccord : 1" (25 mm)
 87.6% CO, 12.4% VI
 Colours : Aquamarine, Conch Shell, Crest, Ocean, Sail, Willow



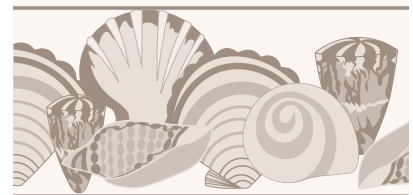
FR-60789 3.05" (77 mm)
Corsica Hoop Fringe /
Frangé Corsica
 Repeat / Raccord : 3" (76 mm)
 60% WD, 40% CO
 Colours : Canvas



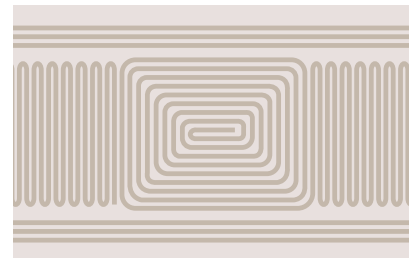
BT-60790 3.2" (81 mm)
Corsica Embroidered Border /
Galon brodé Corsica
 Repeat / Raccord : 7.9" (20 cm)
 90% LI, 10% SPUN PES
 Colours : Flax



BT-61091 3.4" (86 mm)
Cavallo Appliqué Border /
Galon d'application Cavallo
 Repeat / Raccord : 3.05" (78 mm)
 49% VI, 19% LI, 19% PES, 13% CO
 Colours : Flax



BT-61035 3.2" (81 mm)
Corsica Seashell Border /
Galon coquillages Corsica
 Repeat / Raccord : 11.5" (26 cm)
 90% LI, 10% VI
 Colours : Aquamarine, Coral, Oyster



BT-60786 4" (10 cm)
Corsica Appliqué Border /
Galon d'application Corsica
 Repeat / Raccord : 7.65" (19.5 cm)
 55% SPUN PES, 45% CO
 Colours : Canvas



RT-61216 4.5" (11.5 cm)
Corsica Raffia Rosette /
Cartisane raffia Corsica
 97% Raffia, 3% PES
 Colours : Coral, Leaf, Sea

Orange Hill Farm Collection

SAMUEL & SONS
MARK D. SIKES



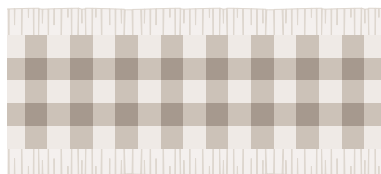
CT-61119 1/4" (6 mm)
MDS Check Piping /
Passepoil carreaux MDS
60% CO, 40% PES
Colours : Azure, Berry, Leaf, Natural



GB-61120 11/16" (18 mm)
MDS Check Gimp /
Lézarde carreaux MDS
100% CO
Colours : Azure, Berry, Leaf, Natural



BR-61121 1.4" (35 mm)
MDS Check Brush Fringe /
Marabout effilé carreaux MDS
99% CO, 1% PES
Colours : Azure, Berry, Leaf, Natural



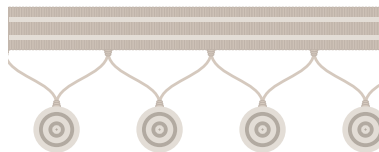
BT-61122 2.5" (63 mm)
MDS Check Border /
Galon carreaux MDS
Repeat : 5/8" (16 mm)
100% CO
Colours : Azure, Berry, Leaf, Natural



CT-61113 5/32" (4 mm)
MDS Rosette Cord with Tape /
Câblé sur pied MDS Rosette
68% CO, 30% PES, 2% NY
Colours : Chocolate, Coral, Goldenrod, Ivory, Mint, Natural, Sky, Wedgewood, White, Willow



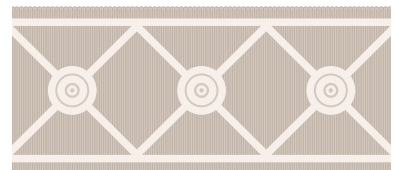
BT-61115 2" (51 mm)
MDS Embroidered Rosette Border /
Galon brodé MDS Rosette
Repeat : 2.5" (63 mm)
50% Mercerized CO, 50% PES
Colours : Chocolate, Coral, Goldenrod, Ivory, Mint, Natural, Sky, Wedgewood, White, Willow



TF-61116 2.25" (57 mm)
MDS Rosette Fringe /
Frange MDS Rosette
Repeat : 1.5" (38 mm)
70% Mercerized CO, 30% PES
Colours : Goldenrod, Ivory, Sky, Willow



GB-61114 5/8" (16 mm)
MDS Rosette Gimp /
Lézarde MDS Rosette
80% Mercerized CO, 20% PES
Colours : Chocolate, Coral, Goldenrod, Ivory, Mint, Natural, Sky, Wedgewood, White, Willow



BT-61117 2.45" (62 mm)
MDS Embroidered Lattice Border /
Galon brodé lattice MDS
Repeat : 2" (51 mm)
50% Mercerized CO, 50% PES
Colours : Chocolate, Coral, Goldenrod, Ivory, Mint, Natural, Sky, Wedgewood, White, Willow



RT-61118 1" (27 mm)
MDS Rosette /
Cartisane MDS
73% WD, 27% Mercerized CO
Colours : Goldenrod, Ivory, Mint, Natural, Sky, White, Willow

Belvedere Collection



BT-61070 1.65" (42 mm)
Dorian Velvet Border /
Galon velours Dorian
Repeat : 1.5" (38 mm)
52% VI, 18% PES, 15% CO, 15% LI
Colours : Azure, Copper, Evergreen, Linen, Mineral, Snow



BT-61072 1.75" (44 mm)
Lennox Velvet Border /
Galon velours Lennox
Repeat : 5.25" (13.3 cm)
40% PES, 26% VI, 19% LI, 15% CO
Colours : Emerald, Garnet, Ivory, Lapis, Oro, Oyster, Verdigris



BT-61071 2.65" (67 mm)
Isadora Velvet Border /
Galon velours Isadora
Repeat : 2" (51 mm)
48% CO, 42% VI, 10% PES
Colours : Oyster, Pearl, Sterling Blue

Orange Hill Farm Collection

SAMUEL & SONS
MARK D. SIKES



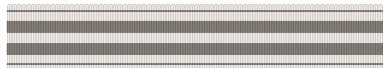
CT-61105 3/16" (5 mm)
MDS Stripe Cord with Tape /
Câblé sur pied rayé MDS
82% Mercerized CO, 17% PES, 1% NY
Colours : Chocolate, Evergreen, Fern, Iris, Jonquil, Navy, Poppy, Red, Sapphire, Wheat



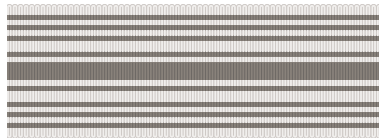
CT-61106 1/4" (6 mm)
MDS Stripe Piping /
Passepoil rayé MDS
99.7% Mercerized CO, 0.3% PES
Colours : Chocolate, Evergreen, Fern, Iris, Jonquil, Navy, Poppy, Red, Sapphire, Wheat



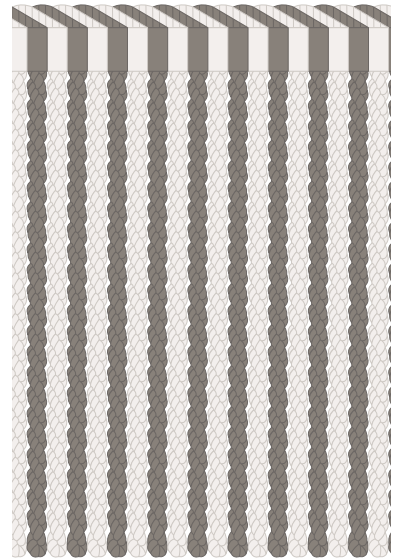
GB-61107 1/2" (13 mm)
MDS Stripe Gimp /
Lézarde rayée MDS
100% Mercerized CO
Colours : Chocolate, Evergreen, Fern, Iris, Jonquil, Navy, Poppy, Red, Sapphire, Wheat



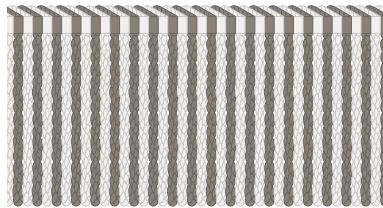
BT-61108 1" (26 mm)
MDS 1" Stripe Border /
Galon rayé 26 mm MDS
100% Mercerized CO
Colours : Chocolate, Evergreen, Fern, Iris, Jonquil, Navy, Poppy, Red, Sapphire, Wheat



BT-61109 2" (51 mm)
MDS 2" Stripe Border /
Galon rayé 51 mm MDS
100% Mercerized CO
Colours : Chocolate, Evergreen, Fern, Iris, Jonquil, Navy, Poppy, Red, Sapphire, Wheat



BU-61111 8.25" (21 cm)
MDS 8.25" Stripe Bullion Fringe /
Frangé moulignée rayée 21 cm MDS
100% Mercerized CO
Colours : Fern, Iris, Sapphire, Wheat



BU-61110 3" (76 mm)
MDS 3" Stripe Bullion Fringe /
Frangé moulignée rayée 76 mm MDS
100% Mercerized CO
Colours : Fern, Iris, Sapphire, Wheat



BT-61112 4" (10.1 cm)
MDS 4" Stripe Border /
Galon rayé 10.1 cm MDS
98% Mercerized CO, 2% PES
Colours : Fern, Iris, Sapphire, Wheat

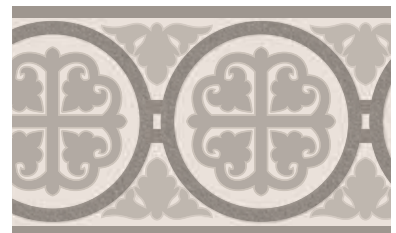
Belvedere Collection



BT-61073 1.3" (33 mm)
Linora Velvet Border /
Galon velours Linora
Repeat : 2" (51 mm)
44% VI, 29% PES, 27% CO
Colours : Juniper, Marble, Medallion, Sea Blue



BT-61069 2.5" (64 mm)
Arlo Velvet Border /
Galon velours Arlo
Repeat : 5" (12.7 cm)
55% CO, 25% VI, 20% PES
Colours : Granite, Green Jasper, Patina, Rose Quartz, Sapphire



BT-61074 2.8" (71 mm)
Paloma Velvet Border /
Galon velours Paloma
Repeat : 2.5" (64 mm)
41% VI, 22% PES, 20% LI, 17% CO
Colours : Blush, Coral, Imperial, Jonquil, Snow, Willow





US: 212.704.8000
UK/EU: +44 (0) 20.7351.5153
FR: +33 (0)1 42.33.22.90
SAMUELANDSONS.COM





Where color and
craft intertwine

— PASSEMENTERIE ARTIST —
Elizabeth Ashdown

SAMUEL & SONS IS TRIM.

samuelandsons.com

